

Polaris Specifications

Features and Benefits

The Polaris Rail Ranger Crew road/rail vehicle is designed to operate in a railway environment for the transporting of personnel to and from the place of work and for towing up to 10 Type B trailers with a maximum gross weight of no more than 10,000 kg. The vehicle may tow a non-serviced braked load of no more than 4,000kg.

Vehicle Data	Metric	Imperial
Overall Length	3860 mm	152 in
Overall Width	1720 mm	68 in
Overall Height (on rail)	1960 mm	77 in
Vehicle Converted Weight (dry)	1,355 kg	2,987 lbs
Vehicle Converted Weight (fully laden)	2,313 kg	5,099 lbs
Maximum Travel Speed (forward)	32 kph	20 mph
Maximum Travel Speed (reverse)	16 kph	10 mph
Maximum Recovery Speed	8 kph	5 mph
Maximum Towing Speed	16 kph	10 mph
Maximum Rail Cant – Travelling	200 mm	8 in
Maximum Rail Cant – On / Off Tracking	150 mm	6 in
Maximum Rail Gradient – Travelling	1:25	
Maximum Rail Gradient – On/Off Tracking	1:25	
Minimum Rail Curve (radius)	80 m	
Front Rail Wheel Diameter (new/worn)	250 / 240 mm	
Rear Rail Wheel Diameter (new/worn)	250 / 240 mm	

Dimensions / Drawings

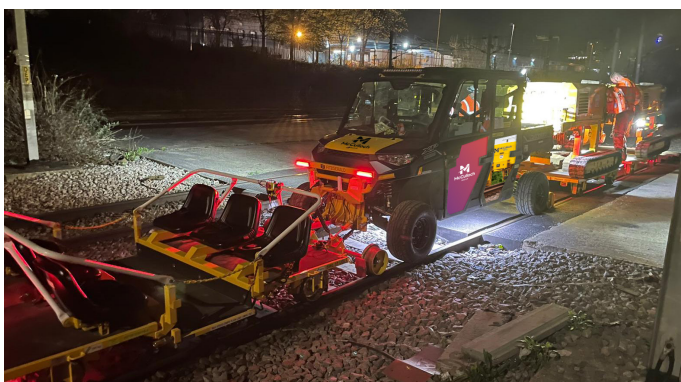
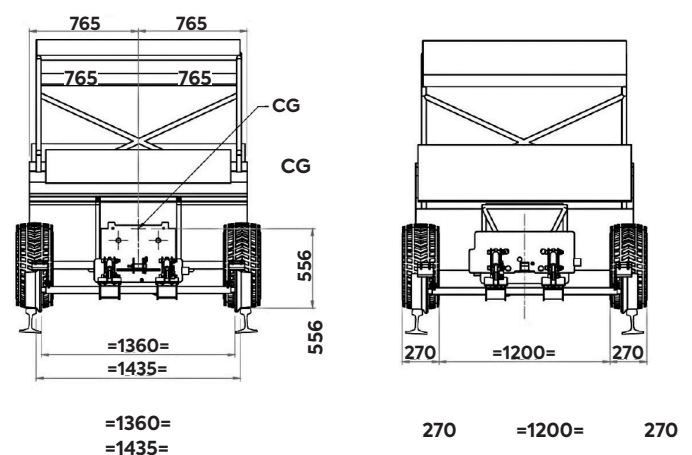
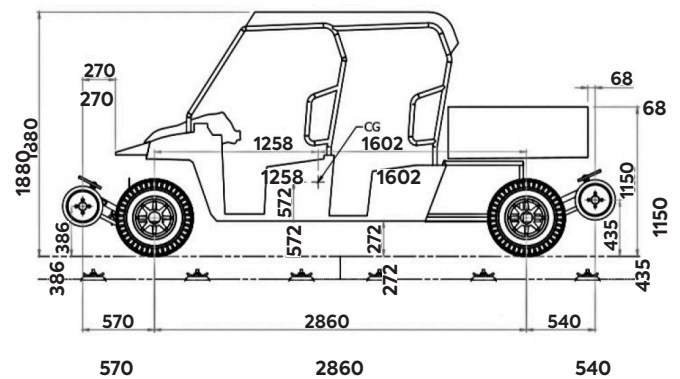
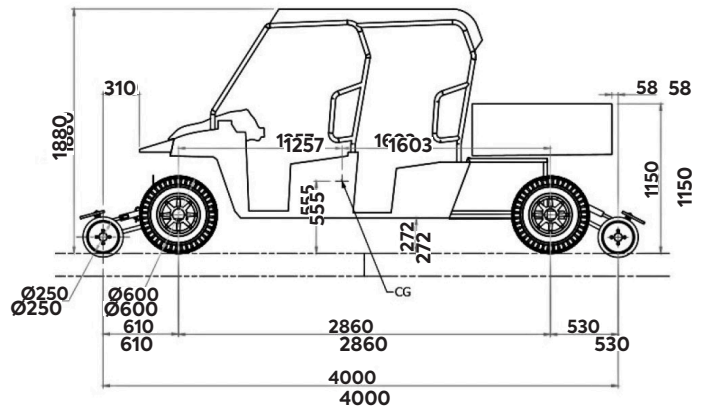


Fig. 01 | The Polaris being prepared for site work with 6 seat trolley carrier to the front and transport trolley with TRTs™ to the rear.